

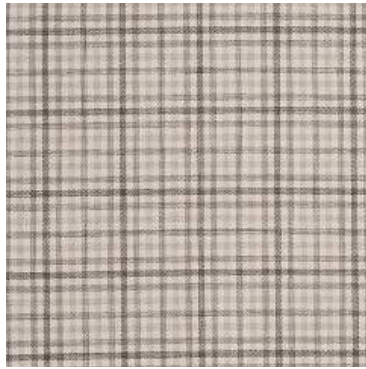


MALTA ~ a medley of woven check and stripe designs

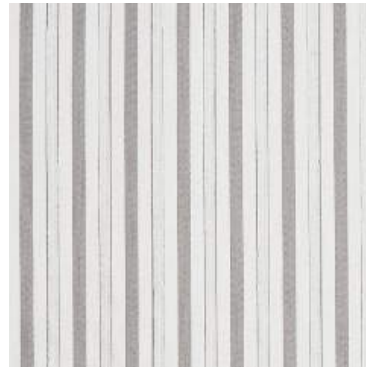
Encompassing a medley of woven check and stripe designs, Malta presents a mix of tactile finishes inspired by traditional Maltese influences. Paying homage to awe-inspiring landscapes, rugged limestone architecture has inspired 7 beautiful designs. Perfect for adding depth and texture to spaces, the collection's varied portfolio of stripes is complemented by a subtle colour block embroidery design for maximum impact. A muted palette, spanning limestone hues to rustic clay tones, evokes understated luxury in a plethora of spaces, ensuring a timelessly on-trend décor scheme.



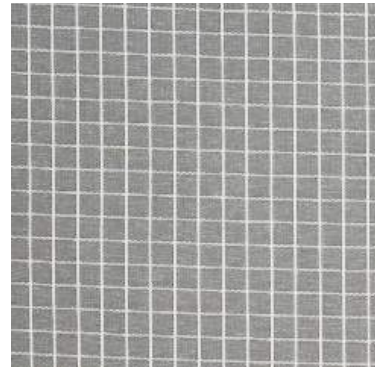
Maltese Limestone



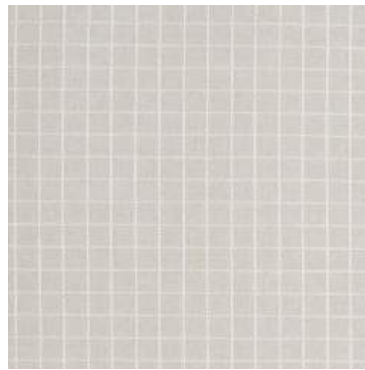
Marsa Limestone



Floriana Limestone



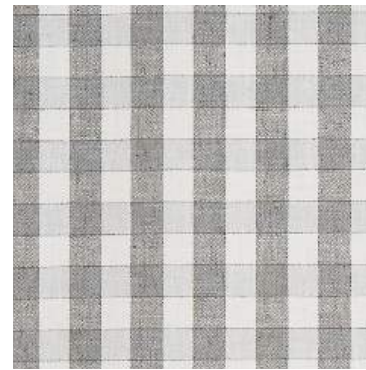
Gozo Limestone



Gozo Pebble



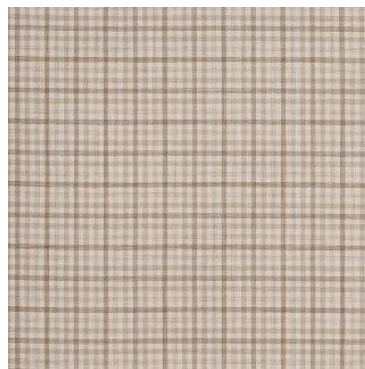
Comino Limestone



Valetta Limestone



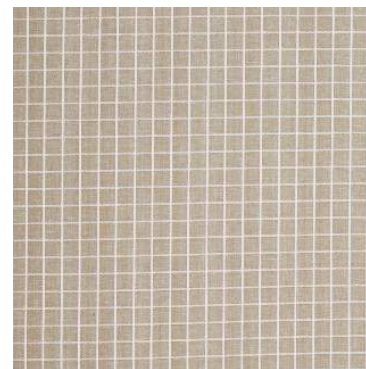
Maltese Sand



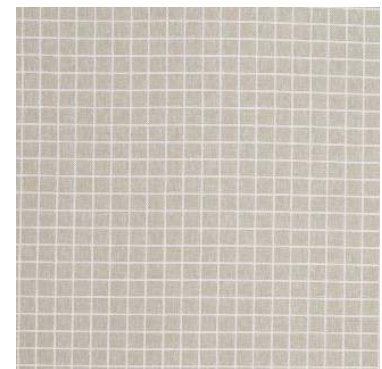
Marsa Sand



Floriana Sand



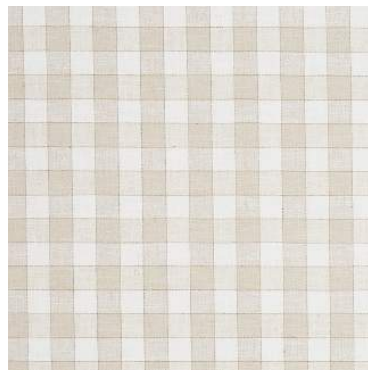
Gozo Sand



Gozo Linen



Comino Sand



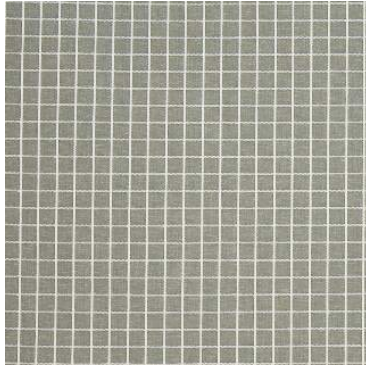
Valetta Sand



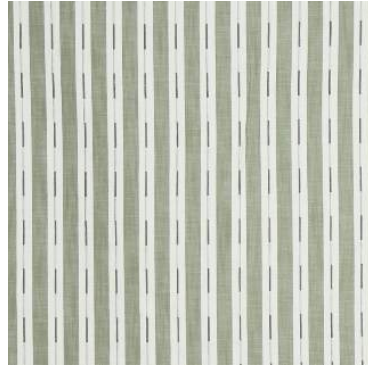
Maltese Basil



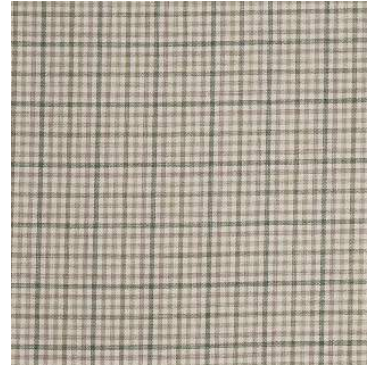
Floriana Basil



Gozo Basil



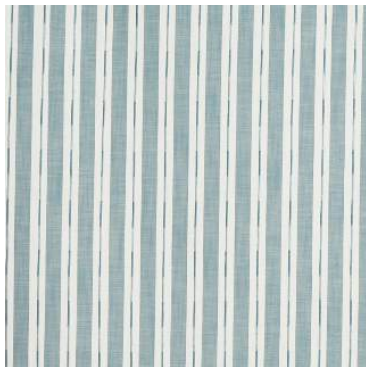
Comino Basil



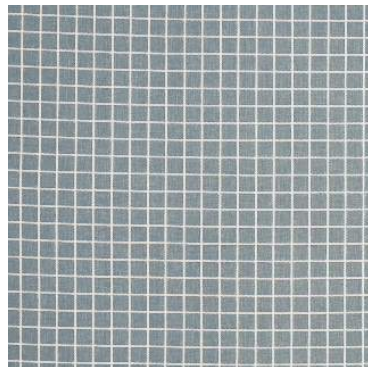
Marsa Basil



Verdala Azure



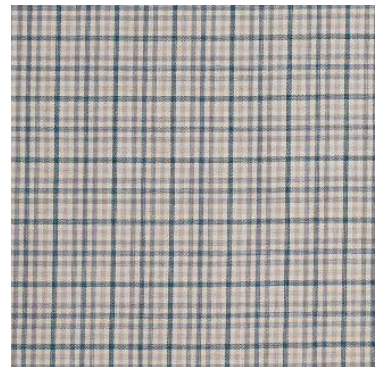
Comino Azure



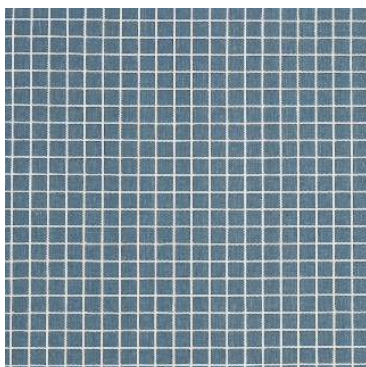
Gozo Azure



Floriana Azure



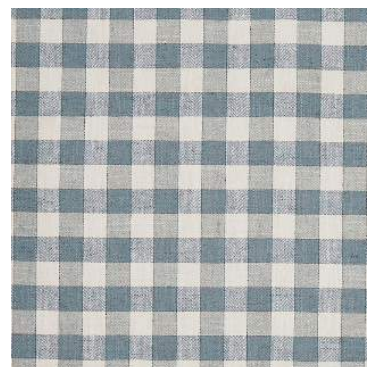
Marsa Azure



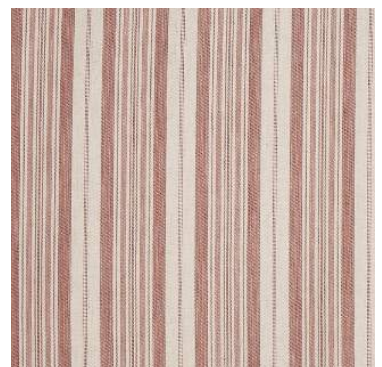
Gozo Indigo



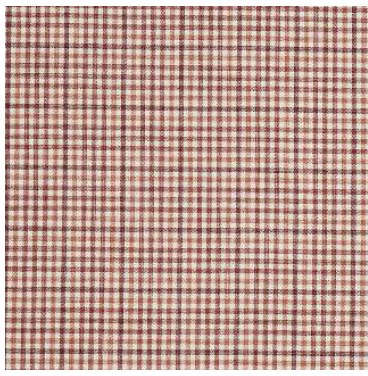
Comino Indigo



Valetta Azure



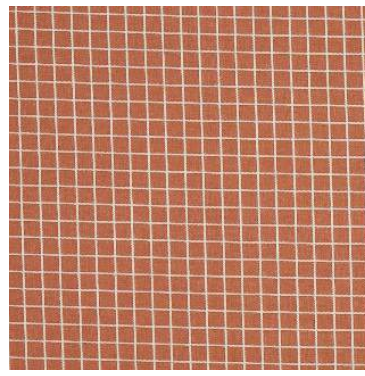
Maltese Sunset



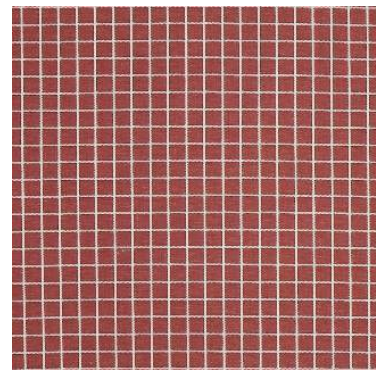
Marsa Sunset



Floriana Sunset



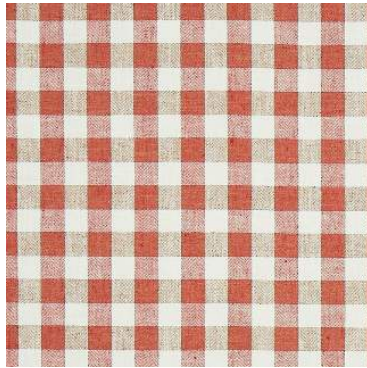
Gozo Sunset



Gozo Clay



Comino Sunset



Valetta Sunset

MALTA COLLECTION DETAILS

Comino

54% Cott/26% Visc/20% Poly.
144cm (useable 140cm)
V: 8cm | H: 5cm
Curtaining & Accessories
Dry Clean only

Gozo

39% Poly/38% Cott/16% Visc/7% Lin
144m (useable 140cm)
V: 2.7cm | H: 3cm
Multi Purpose 20,000 rubs
☐ 30°C ☒ ☑ ☐

Marsa

88% Poly/8% Cott/4% Linen
144cm (useable 140cm)
V: 10cm | H: 9.5cm
Multi Purpose 100,000 rubs
☐ 30°C ☒ ☑ ☐

Verdala

88% Poly/8% Cott/4% Linen
144m (useable 140cm)
V: Stripe | H: 8.7cm
Multi Purpose 100,000 rubs
☐ 30°C ☒ ☑ ☐

Floriana (Embroidery)

52% Cotton/48% Polyester
144cm (useable 140cm)
V: Stripe | H: 6.3cm
Curtaining & Accessories
Dry Clean only

Maltese

64% Poly/18% Cott/9% Lin/9% Visc
142m (useable 140cm)
V: Stripe | H: 17.5cm
Multi Purpose 100,000 rubs
☐ 30°C ☒ ☑ ☐

Valetta

100% Polyester
143cm (useable 139cm)
V: 8.2cm | H: 8.2cm
Multi Purpose 100,000 rubs
☐ 30°C ☒ ☑ ☐

