



NEW FOREST ~ intricate, hand-drawn illustrations of whimsical flora, fauna & sprawling pampas

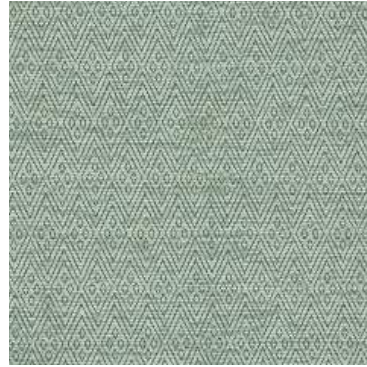
Invite the outdoors in with the New Forest Collection. Encompassing six elegant designs, the collection features intricate, hand-drawn illustrations of whimsical flora, fauna, and sprawling pampas, complemented by a palette of serene hues ranging from delicate naturals to sage greens. Textured chenille designs and a sophisticated stripe embroidery provide a luxurious twist on the whimsical theme, whilst the collection's PT Eco prints are presented on a textured cloth for a naturally rustic finish. New Forest is both inspired by, and conscious of, the earth's natural elements.



Aviary Moss



Pergola Moss



Fretwork Moss



Coppice Apple



Aviary Apple



Pampas Grass Apple



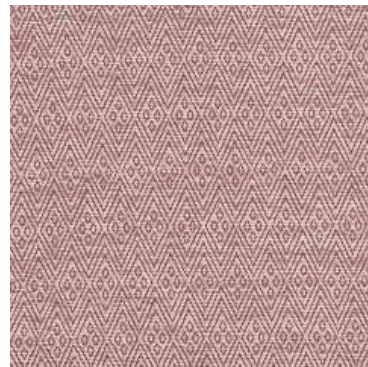
Perennial Apple



Aviary Woodrose



Perennial Woodrose



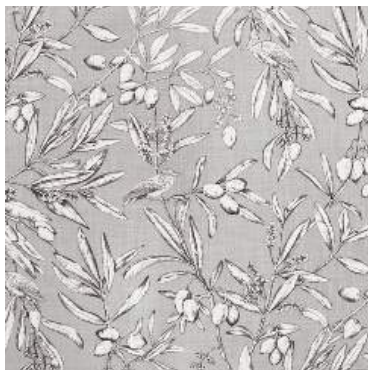
Fretwork Woodrose



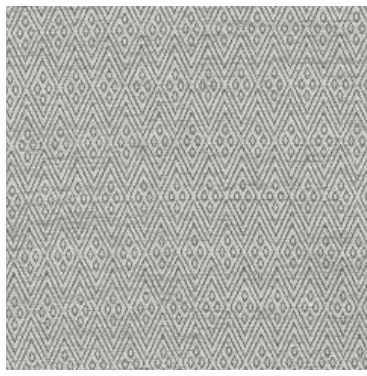
Coppice Woodrose



Pampas Grass Woodrose



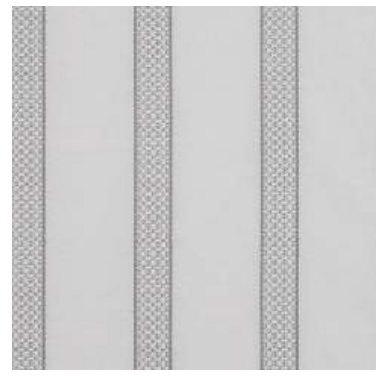
Aviary Frost



Fretwork Frost



Perennial Frost



Pergola Frost



Pampas Grass Frost



Aviary Parchment



Pergola Parchment



Coppice Parchment



Perennial Parchment



Fretwork Parchment



Pampas Grass Parchment



Coppice Bluebell



Pergola Bluebell



Pampas Grass Bluebell



Fretwork Bluebell



Perennial Bluebell



Aviary Bluebell

NEW FOREST COLLECTION DETAILS

Aviary (Eco Print)

100% Cotton
 149cm (useable 142cm)
 V: 63.4cm half drop | H: 70.6cm
 Multi Purpose 80,000 rubs
 30°C ✗ 👁 P ☒

Coppice (Eco Print)

100% Cotton
 149cm (useable 142cm)
 V: 46.6cm half drop | H: 56.3cm
 Multi Purpose 80,000 rubs
 30°C ✗ 👁 P ☒

Fretwork

85% Polyester /15% Cotton
 145cm (useable 142cm)
 V: 7.8cm | H: 2.3cm
 Multi Purpose 35,000 rubs
 30°C ✗ 👁 P ☒

Pampas Grass (Eco Print)

100% Cotton
 149cm (useable 142cm)
 V: 69.5cm | H: 70.3cm
 Multi Purpose 80,000 rubs
 30°C ✗ 👁 P ☒

Perennial

73% Polyester /27% Linen
 145m (useable 141cm)
 V: 58.7cm | H: 35.5cm
 Multi Purpose 45,000 rubs
 30°C ✗ 👁 P ☒

Pergola (Embroidery)

58% Polyester /42% Cotton
 150m (useable 135cm)
 V: Stripe | H: 18.2cm
 Curtaining & Accessories
 30°C ✗ 👁 P ☒

