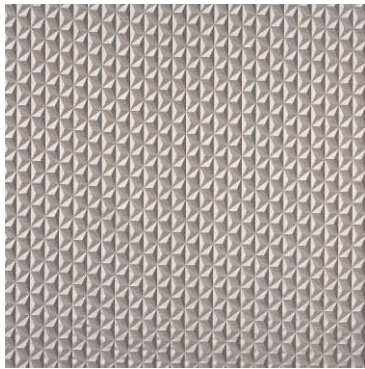


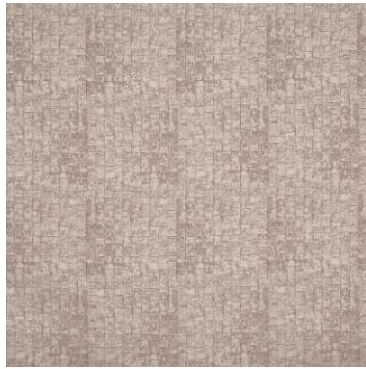


**PENTHOUSE ~ traditional damasks, contemporary geometrics and classic metallics**

Taking inspiration from grand architecture, Penthouse brings a boutique feel into the home with its shimmering highlights and opulent jacquards. The collection fuses traditional damasks, contemporary geometrics and classic metallics, all completed with a stunning burn-out sheer.



**Delphine Fawn**



**Atticus Fawn**



**Seraphina Fawn**



**Annaliese Fawn**



**Constance Fawn**



**Phineas Fawn**



**Rosaline Fawn**



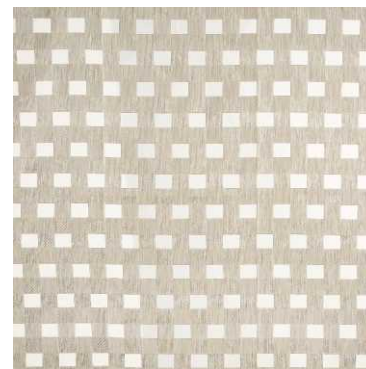
**Josephine Fawn**



**Seraphina Ivory**



**Verity Ivory**



**Rosaline Ivory**



**Phineas Ivory**



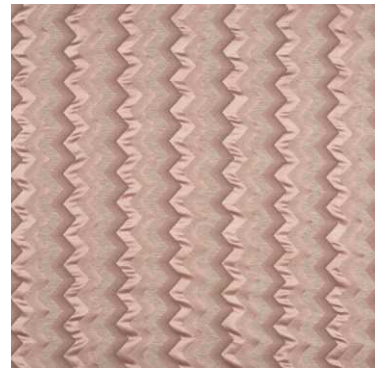
**Constance Ivory**



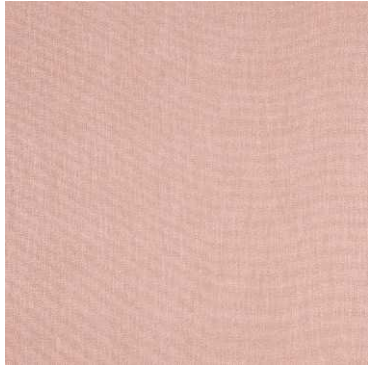
**Annaliese Ivory**



**Delphine Ivory**



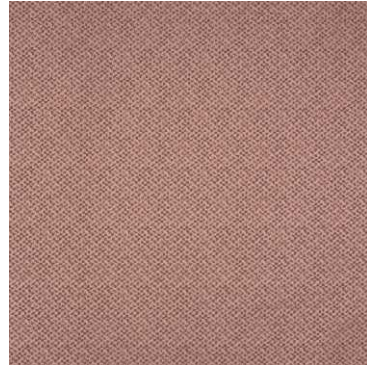
**Constance Blush**



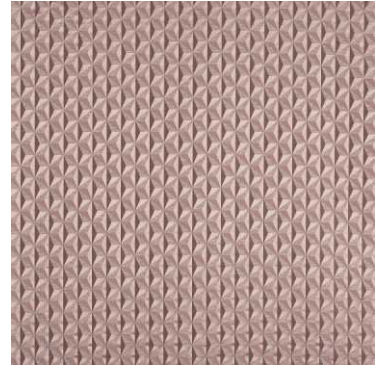
**Josephine Blush**



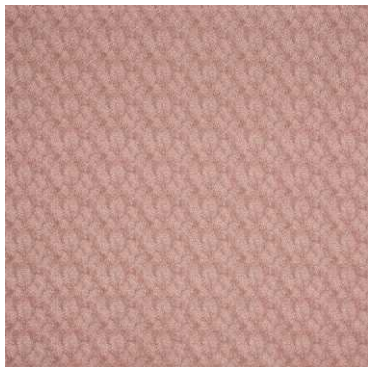
**Seraphina Blush**



**Annaliese Blush**



**Delphine Blush**



**Verity Blush**



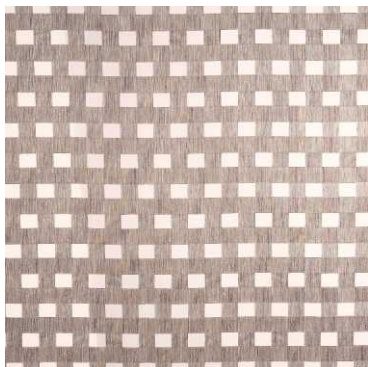
**Phineas Blush**



**Constance Silver**



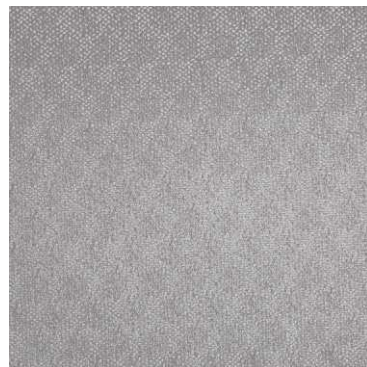
**Atticus Silver**



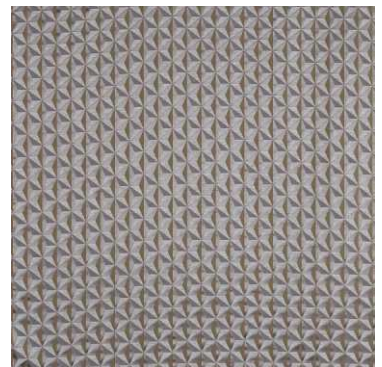
**Rosaline Silver**



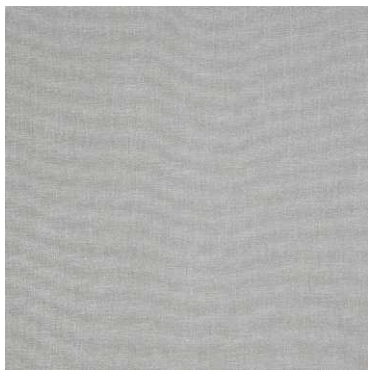
**Seraphina Silver**



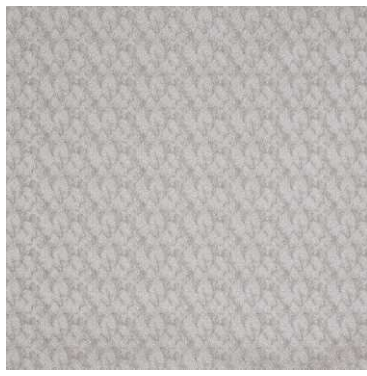
**Anneliese Silver**



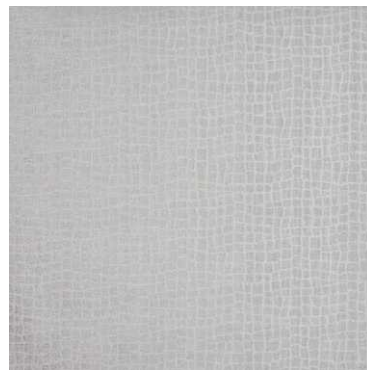
**Delphine Silver**



**Josephine Silver**



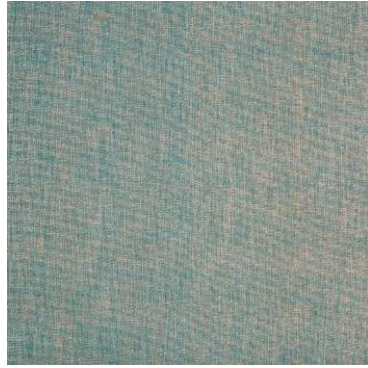
**Verity Silver**



**Phineas Silver**



**Constance Marine**



**Josephine Marine**



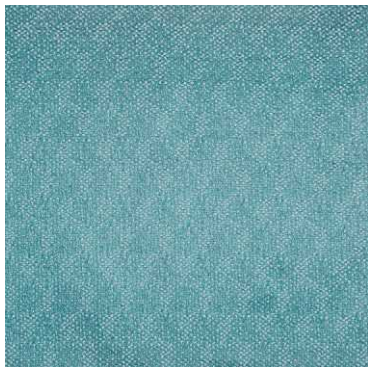
**Delphine Marine**



**Seraphina Marine**



**Atticus Marine**



**Annaliese Marine**

**PENTHOUSE COLLECTION FABRIC DETAILS**

**Annaliese**

73% Cotton /27% Polyester  
140cm (useable 136cm)  
V: 12.5cm | H: 8.5cm  
Curtaining & Cushions  
☹️ 30°C ❌ 👁️ (P) ❌

**Atticus**

100% Polyester  
141cm (137cm)  
V: 47.5cm | H: 23cm  
Dual Purpose 35,000 rubs  
☹️ 30°C ❌ 👁️ (P) ❌

**Constance**

81% Polyester /19% Cotton  
145cm (useable 141cm)  
V: 10.2cm | H: 17.5cm  
Curtaining & Cushions  
☹️ 30°C ❌ 👁️ (P) ❌



**Delphine**

81% Polyester /19% Cotton  
146cm (useable 141cm)  
V: 7cm | H: 9cm  
Curtaining & Cushions  
☹️ 30°C ❌ 👁️ (P) ❌

**Josephine**

78% Polyester /22% Cotton  
144cm (useable 140cm)  
Plain  
Dual Purpose 70,000 rubs  
☹️ 30°C ❌ 👁️ (P) ❌

**Phineas**

100% Polyester  
145cm (useable 141.5cm)  
V: 28cm | H: 35.3cm  
Dual Purpose 50,000 rubs  
☹️ 30°C ❌ 👁️ (P) ❌

**Rosaline (Voile)**

100% Polyester  
300cm (useable 295cm)  
V: 17.6cm | H: 9.7cm  
Curtaining  
☹️ 30°C ❌ 👁️ (P) ❌

**Seraphina**

53% Polyester /47% Cotton  
142cm (useable 137.5cm)  
V: 22cm | H: 23cm  
Curtaining & Cushions  
☹️ 30°C ❌ 👁️ (P) ❌

**Verity**

67% Polyester /31% Cotton  
141cm (useable 138cm)  
V: 8.5cm | H: 11.5cm  
Curtaining & Cushions  
☹️ 30°C ❌ 👁️ (P) ❌