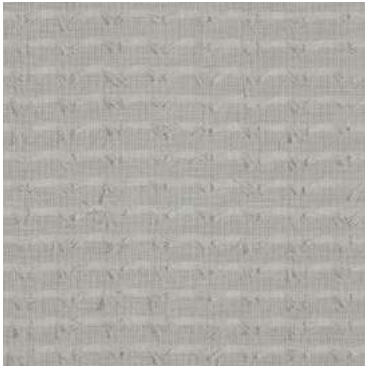




ROCKIES ~ intriguing collection of wide width sheers

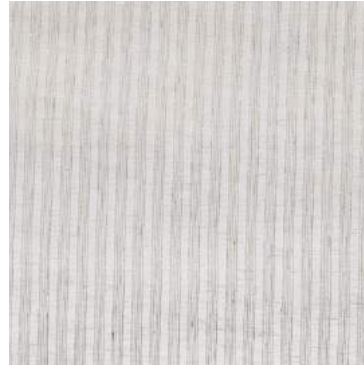
Marking a new chapter in our portfolio of sheers, Rockies incorporates a myriad of diverse techniques to create an unexpected, alluring addition to our PT Extra portfolio. Each design tells a different tale of interest, with atmospheric prints setting the scene for the intriguing techniques to follow. Abstract interpretations of natural scenes go hand-in-hand with the collection's tactile finishes, from tufted sheer finishes to contemporary stripes showcasing hints of subtle metallic running throughout. A light and delicate palette anchors the ethereal nature of Rockies, with pops of understated colour amplifying the visual interest guaranteed by the collection's striking designs.



Whistler Straw



Cedar Straw



Quebec Linen



Alberta Linen



Banff Straw



Breton Vanilla



Toronto Linen



Elder Linen



Ottawa Linen



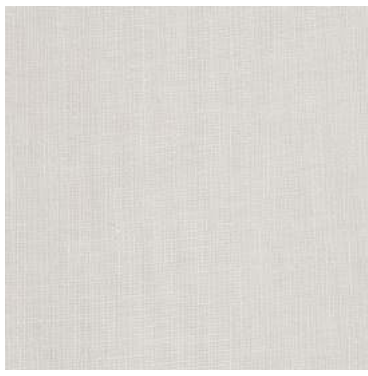
Calgary Linen



Niagara Chalk



Whistler Chalk



Waterton Chalk



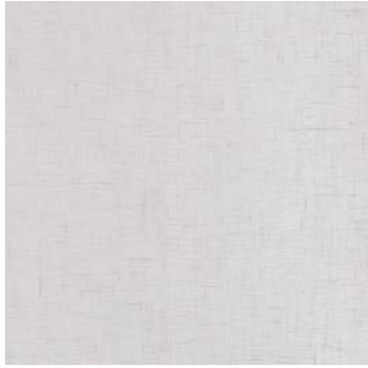
Ottawa Chalk



Alberta Chalk



Toronto Chalk



Ottawa Vanilla



Cedar Chalk



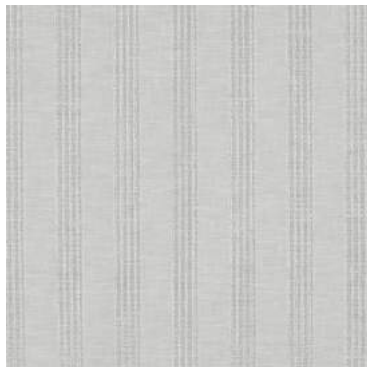
Whistler Vanilla



Waterton Vanilla



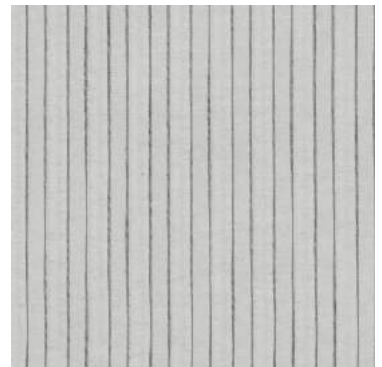
Breton Chalk



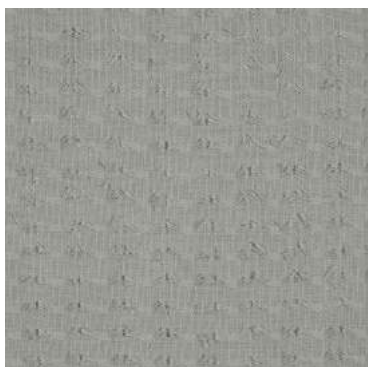
Calgary Chalk



Montreal Silver



Toronto Silver



Whistler Silver



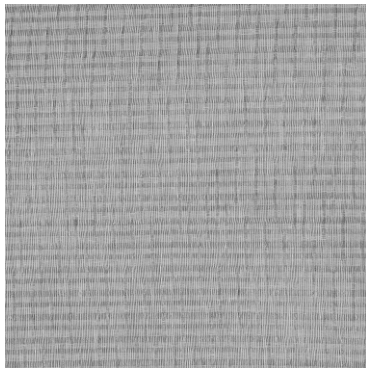
Breton Silver



Quebec Chalk



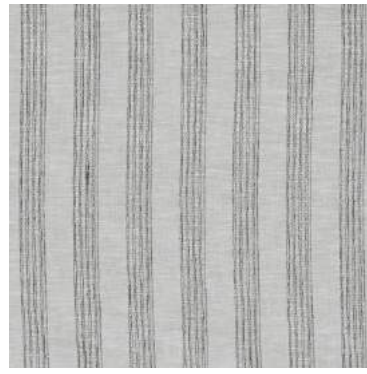
Yoho Silver



Alberta Silver



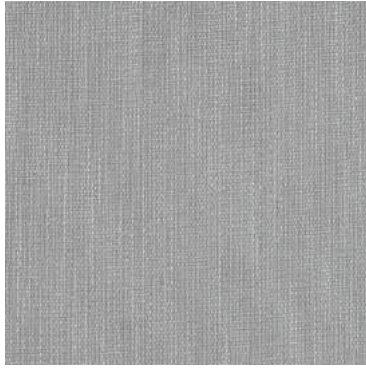
Ottawa Silver



Calgary Silver



Elder Silver



Waterton Silver



Whistler Storm



Waterton Storm



Montreal Storm



Niagara Storm



Ottawa Storm



Banff Storm



Breton Storm



Elder Apple



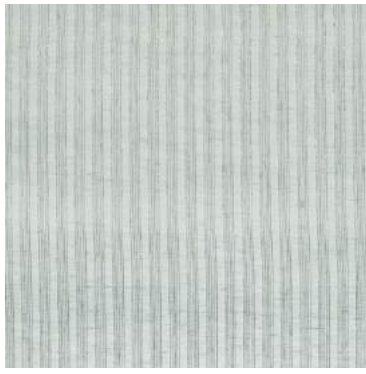
Whistler Apple



Waterton Apple



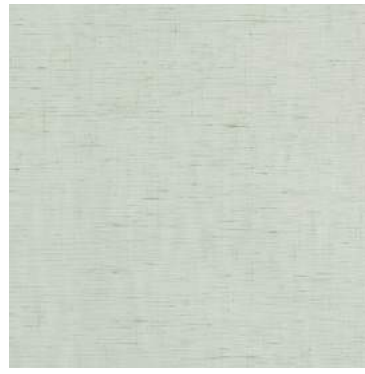
Evergreen Apple



Quebec Apple



Cedar Apple



Ottawa Apple



Breton Apple

ROCKIES COLLECTION DETAILS

Alberta

43% Polyester /32% Lin./25% Cott. 306cm drop (useable 302cm)
Random
Curtaining
Oeko-Tex
30°C X P

Banff

100% Polyester 304cm drop (useable 300cm)
V: 60.5cm | H: 89.7cm
Curtaining
Oeko-Tex
30°C X P

Breton

80% Polyester /20% Cotton 314cm drop (useable 309cm)
V: Stripe | H: Random
Curtaining
Oeko-Tex
30°C X P

Calgary

52% Cotton /48% Polyester 306cm drop (useable 302cm)
V: Stripe | H: 4.7cm
Curtaining
Oeko-Tex
30°C X P

Cedar

100% Polyester 314cm drop (useable 309cm)
Plain
Curtaining
Oeko-tex
30°C X P

Elder

100% Polyester 302cm drop (useable 298cm)
V: 71cm | H: 136.5cm
Curtaining
Oeko-Tex
30°C X P

Evergreen

100% Polyester 302cm drop (useable 298cm)
V: 93.5cm | H: 90cm
Curtaining
Oeko-Tex
30°C X P

Montreal

100% Polyester 302cm drop (useable 298cm)
V: 62.3cm | H: 136.7cm
Curtaining
Oeko-Tex
30°C X P

Niagara

59% Poly./39% Cott./2% Lin. 308cm drop (useable 304cm)
V: Stripe | H: 1.5cm
Curtaining
Oeko-Tex
30°C X P

Ottawa

100% Polyester 304cm drop (useable 300cm)
Plain
Curtaining
Oeko-Tex
30°C X P

Quebec

100% Polyester 310cm drop (useable 306cm)
V: Stripe | H: 2cm
Curtaining
Oeko-Tex
30°C X P

Toronto

89% Poly./7% Cott./4% Lin. 306cm drop (useable 302cm)
V: Stripe | H: 4cm
Curtaining
Oeko-Tex
30°C X P

Waterton

58% Poly./36% Cott./6% Lin. 306cm drop (useable 302cm)
Plain
Curtaining
Oeko-Tex
30°C X P

Whistler

42% Visc. /32% Cott. / 26% Poly. 312cm drop (useable 308cm)
Random
Curtaining
Oeko-Tex
30°C X P

Yoho

100% Polyester 302cm drop (useable 298cm)
V: 66cm | H: 68cm
Curtaining
Oeko-Tex
30°C X P



STANDARD 100

NOTE: These wide sheers are to be used width to length



NOTE:
This is a Prestigious Textiles imported collection. Orders are consolidated and airfreighted from the UK.