

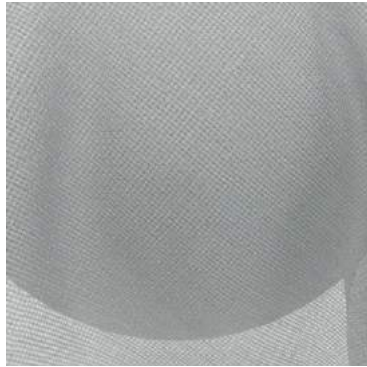


**BRIGHT & ICONIC ~ recycled wide width curtaining textures**

Combining opulence with quiet sophistication successfully is rare, but when achieved the outcome is quite spectacular. It is definitely a yin meets yang moment and that is what you will get with Bright and Iconic. This collection is a great addition to our very successful, Transit & Focus collection. These eco-friendly qualities are produced from GRS certified recycled polyester and are safe and non-toxic.



**Bright Snow**



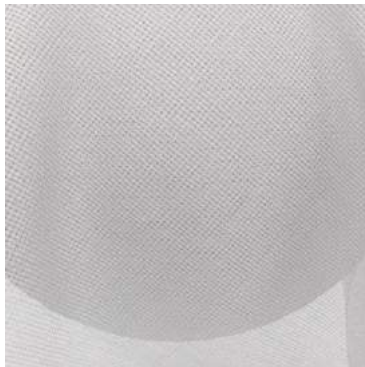
**Bright Metal**



**Iconic Silver**



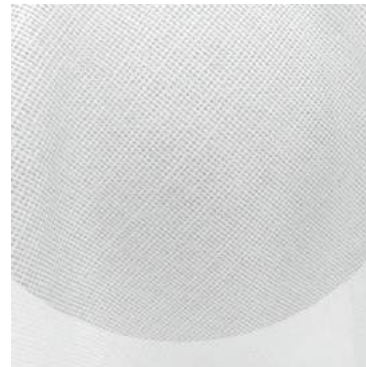
**Bright Cloud**



**Bright Zinc**



**Iconic Sterling**



**Bright Pearl**



**Iconic Birch**



**Bright Wool**



**Iconic Sand**



**Bright Rattan**



**Iconic Cream**





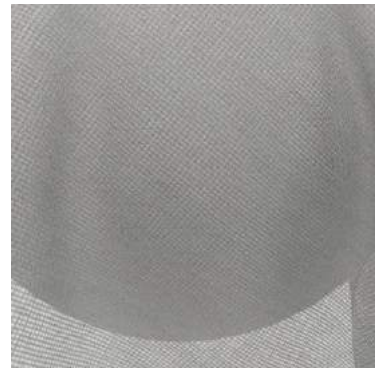
**Iconic Dune**



**Bright Linen**



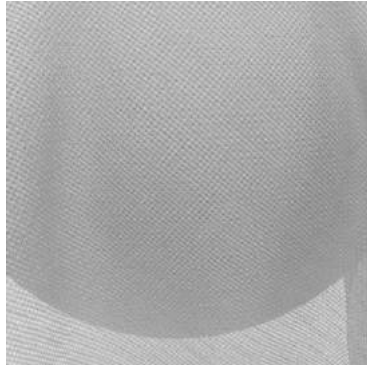
**Bright Sterling**



**Bright Rabbit**



**Iconic Iron**



**Bright Limestone**



**Bright Charcoal**



**Iconic Pewter**



**Bright Raven**



**Iconic Night**



**Bright Denim**



**Iconic Denim**



**Bright River**



**Iconic Sky**



**Bright Sky**



**Iconic Fountain**

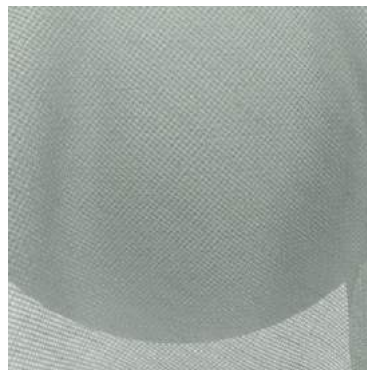




**Bright Baltic**



**Iconic Sage**



**Bright Spa**



**Iconic Lichen**



**Bright Kiwi**



**Iconic Tea**



**Iconic Straw**



**Bright Chartreuse**



**Iconic Gold**



**Bright Petal**



**Iconic Bon Bon**



**Bright Coral**



**Iconic Sorbet**



**Bright Blush**



## COLLECTION DETAILS : BRIGHT & ICONIC

### Bright

55% Recycled Polyester /45% Polyester

Approx. 306cm

Plain

Curtaining

Railroaded

GRS | Eco

ISO 14001

Oeko-Tex | FR



111 gr/m<sup>2</sup>

### Iconic

62% Recycled Poly /38% Poly

Approx. 305cm

V: 6.51cm | H: 8.66xm

Curtaining & Accessories

Railroaded

GRS | Eco

ISO 14001

Oeko-Tex | FR



213 gr/m<sup>2</sup>



ISO 14001

Environmental  
Management



STANDARD  
100  
2111231  
Centexbel



Bright & Iconic Collection - Page 4/4