

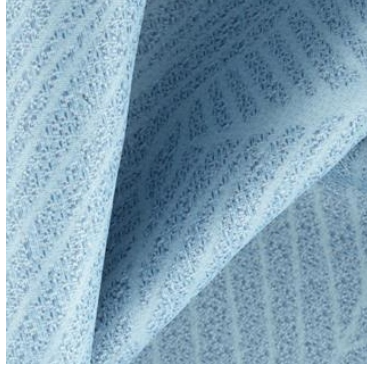


**ECLIPSE ~ dim out jacquards**

A wide width dim out collection that has that extra edge of on-trend designs carefully chosen to be in touch with the essence of nature, and natural fibres. There are five gorgeous designs in beautifully diverse colourways. Think unstructured stripes, dry handle herringbone and deep slubs, and you will understand the beauty and versatility of Eclipse.



**Aphelion Sterling**



**Umbra Denim**



**Eternal Iron**



**Halo Cement**



**Eternal Cloud**



**Aphelion Mouse**



**Elysian Charcoal**



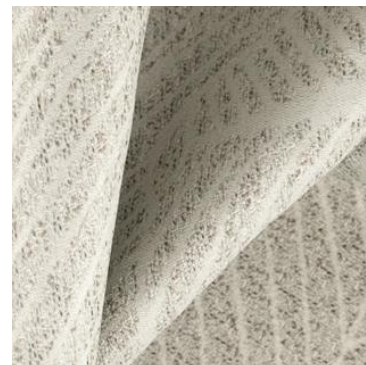
**Aphelion Slate**



**Eternal Ebony**



**Elysian Otter**



**Umbra Fossil**



**Eternal Mushroom**





**Elysian Rattan**



**Halo Nougat**



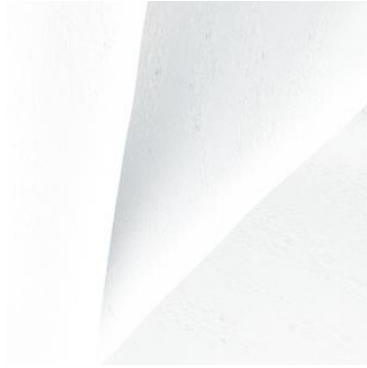
**Halo Dune**



**Umbra Sesame**



**Umbra Ecrú**



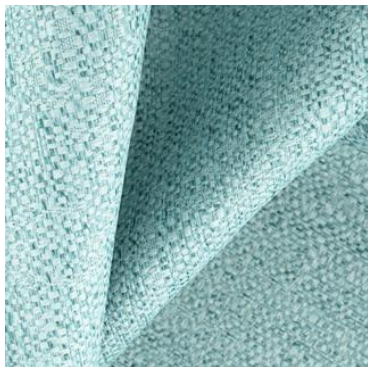
**Aphelion Ice**



**Eternal Snow**



**Umbra Duck Egg**



**Eternal Reef**



**Eternal River**



**Elysian Ink**



**Halo Violet**



**Elysian Boudoir**



**Celestial Spice**







## ECLIPSE COLLECTION DETAILS

### Aphelion

100% Polyester  
Approx. 300cm Railroded  
V: 48.7cm | H: 58.3cm  
Curtaining & Accessories

### Eternal

100% Polyester  
Approx. 300cm Railroded  
Plain  
Curtaining & Accessories

### Umbra

100% Polyester  
Approx. 300cm (R/R)  
V: 49cm | H: 54.5cm  
Curtaining & Accessories

### Elysian

100% Polyester  
Approx. 300cm Railroded  
V: 49cm | H: 27.2cm  
Curtaining & Accessories

### Halo

100% Polyester  
Approx. 300cm Railroded  
V: 16.3cm | H: 20.5cm  
Curtaining & Accessories

**OEKO-TEX®**  
CONFIDENCE IN TEXTILES  
**STANDARD 100**  
0611045 Centexbel  
Tested for harmful substances.  
[www.oeko-tex.com/standard100](http://www.oeko-tex.com/standard100)



Please note that all designs are Flame Retardant,  
Multi-Directional and Dim-Out (95% Light Transmission).

