



The Hamptons Collection
Classic stripes and checks



Hamptons is a classic mix of checks and stripes refreshed through a balance of contemporary and nautical colours. Smart, yet easy on the eye, the collection includes an array of weights for enhanced versatility and is proving ideal for the transition between living areas, family rooms and work spaces.



Brunswick Jade



Huntington Jade



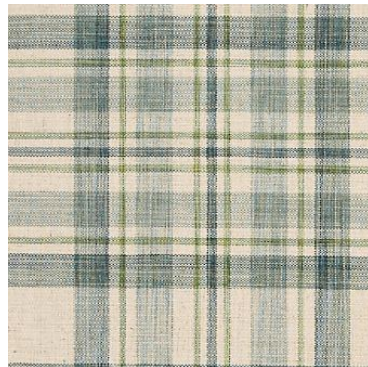
Vermont Citron



Ridgewood Jade



Boston Azure



Washington Jade



Brunswick Mimosa



Boston Silver



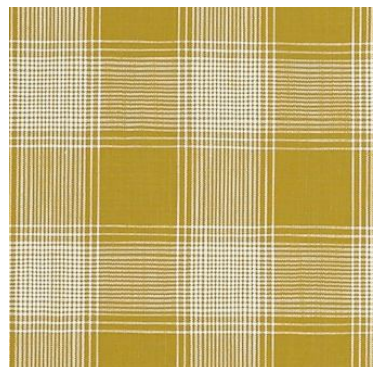
Woodmere Mimosa



Huntington Mimosa



Bridgehampton Silver



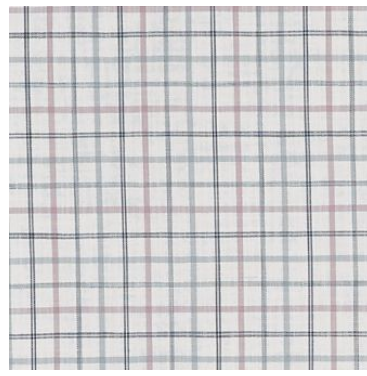
Vermont Mimosa



Washington Mimosa



Bridgehampton Sky



Brunswick Pastel



Vermont Sky



Huntington Pastel



Ridgewood Pastel



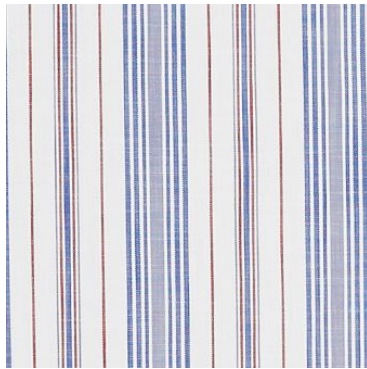
Boston Lilac



Washington Pastel



Brunswick Marina



Ridgewood Marina



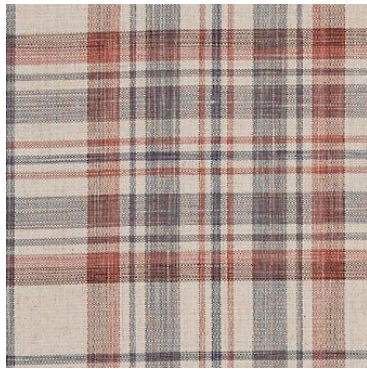
Boston Navy



Huntington Marina



Bridgehampton Navy



Washington Marina



Brunswick Cinnabar



Vermont Latte

Designer's Notes

Perfect opportunity to update a living space this year. Opt for a white interior scheme to magnify and reflect the light around the room. Consider one-off furniture pieces and accessories in vibrant colours or patterns to brighten up the dark nights and team with cosy throws to take off the evening chill.



Ridgewood Cinnabar



Huntington Cinnabar



Boston Ruby



Washington Cinnabar



HAMPTONS COLLECTION DETAILS

Boston
100% Cotton
Approx. 139cm
V: 16.5cm
Dual Purpose 30,000 rubs

Bridgethampton
100% Cotton
Approx. 138cm
V: 7.5cm
Dual Purpose 40,000 rubs

Brunswick
100% Cotton
Approx. 138cm
V: 8.5cm
Dual Purpose 35,000 rubs

Huntington
60% Poly / 40% Cott
Approx. 142cm
V: 0.5cm
Dual Purpose 50,000 rubs



Ridgewood
100% Cotton
Approx. 18cm
Vertical Stripe
Dual Purpose 37,000 rubs

Washington
64% Poly/18% Cott /9% Lin/9% Visc
Approx. 143cm
V: 34.5cm
Dual Purpose 50,000 rubs

Woodmere
100% Cotton
Approx. 138cm
Vertical Stripe
Dual Purpose 25,000 rubs

Vermont
100% Cotton
Approx. 138cm
V: 16.3cm
Dual Purpose 35,000 rubs

